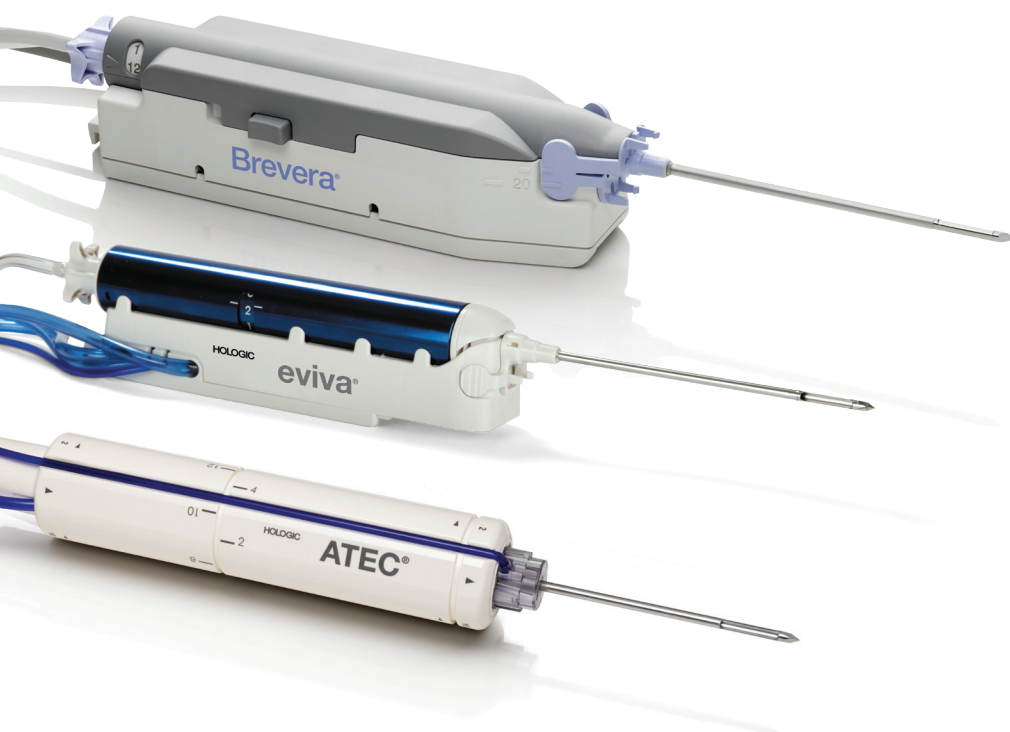


Breast Biopsy Solutions

A comprehensive portfolio of clinically proven solutions from the world leader in breast health



Hologic is the **most recommended brand** in women's imaging and breast biopsy¹



Hologic rated #1 for product experience in breast biopsy.¹

Focused on a **Better Biopsy Experience**

At Hologic, it is our mission to transform breast care with compassionate and effective solutions designed to maximize value, while minimizing the negative impacts of interventional procedures. The best technologies should ease patient anxiety and help clinicians focus on what's most important – providing the best possible care. That's why our curated portfolio of interventional products is supported by clinically proven outcomes and optimized for the future of patient care.



Optimize workflows

- Solutions designed to save time by combining and eliminating steps in the biopsy process
- Quick setup times to keep procedures on track and on time



Create a better patient experience

- Fast, efficient procedures that minimize time spent under compression
- Integrated pain management to address discomfort



Deliver the best outcomes possible

- Confidently approach challenging lesions with clinically proven solutions to acquire the tissue you need for diagnosis
- Give more women an alternative to open surgical biopsy so they can **get back to their lives, sooner**

Hologic Solution to Stereotactic Biopsy

DECADES OF CONTINUOUS INNOVATION

Brevera® Breast Biopsy System with CorLumina® Imaging Technology

A breakthrough in biopsy efficiency

The world's **first** and **only** solution to combine tissue acquisition, realtime imaging and verification, and advanced post-biopsy handling – all in one, integrated system.²

- Previously, **more than 60% of imaging and confirmation occurred outside of the biopsy room.**³ With the Brevera system, there is no need to change rooms, no waiting for sample verification, and no interruptions to the screening schedule.
- Redesigned disposable needle for **54% less waste** and better inventory management.⁴

Improve Patient Experience

- Integrated delivery of pain management, quiet operation, and fast access to information help **improve the patient experience.**⁵
- 9/10 patients felt less uncomfortable** with their Brevera breast biopsy procedure than they expected.⁶

Enhance Workflow

- An **intuitive user interface, real time imaging, and automated specimen collection and separation** work together to save facilities an average of 13 minutes per procedure.⁷
- Brevera core sampling **automatically separates, identifies, and analyzes target samples**, then transfers seamlessly to pathology with minimal handling to help maintain core integrity.

Increase Accuracy

- Real-time imaging** delivers a wealth of information at the point of care – so you can make informed decisions with confidence.²



Affirm® Prone Biopsy System



Affirm® Upright Breast Biopsy Guidance System



Brevera® Breast Biopsy System



12-Chamber Tissue Filter



Brevera® Needle

Integrated Breast Biopsy Guidance Systems

The Brevera® and Eviva® systems are designed for use with the Affirm® prone and upright breast biopsy guidance systems in both stereotactic 2D and 3D™ biopsy procedures, offering optimized access for faster, more accurate procedures, at a lower dose.⁸⁻⁹

Eviva® Breast Biopsy System

Trusted globally in nearly 3,000 facilities

Proven technology trusted globally to deliver a fast, compassionate, and easy breast biopsy.

Fast

- Remove consistent cores **every 4.5 seconds.**¹⁰
- Simple setup** with no software required to program or operate the console.

Compassionate

- Manage patient pain with **local anesthetic directly to the biopsy site** automatically with every core with patented Y-valve.¹¹
- 9/10 clinicians agree** the Eviva device offers a better patient experience compared to other vacuum assisted breast biopsy devices when it comes to what's important:¹²
 - Acquires high quality core samples
 - Minimizes complications** and maximizes patient satisfaction
 - Easy-to-operate**

Easy

- Optimize access to challenging lesions close to the chest wall using a low-profile needle.
- Simple set up and easy cleanup.
- Manage thin breast compressions as small as 16mm.¹³



Eviva® Needle

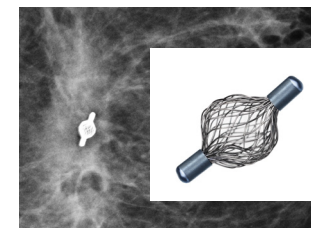


Patented Y-valve



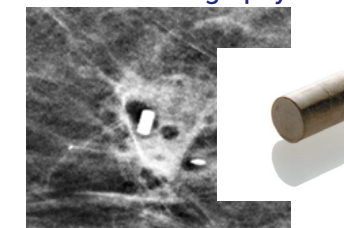
ATEC® Sapphire Console

Tumark® Vision Marker Under Mammography



Tumark® Vision marker
Image courtesy of Dr. Stoeblen, Essen, Germany

SecurMark® Mini Cork Under Mammography



Hologic provides distinct marker shapes with options for great long-term visibility. Designed so you can identify sites with confidence.

In-Room Core Biopsy Imaging

The Eviva® system pairs well with the Faxitron® Core Specimen Radiography System – a small tabletop system that eliminates delays for core sample verifications. With high-resolution imaging right in the biopsy room, you can accelerate procedures and get patients out of compression faster.¹⁴



Faxitron® Core Specimen Radiography System

Hologic Solution to Ultrasound Biopsy

EMPOWERING YOUR CHOICE

ATEC® Breast Biopsy System

Powerful vacuum

Designed for compassionate patient care, the system delivers consistent, quality cores in one needle insertion.

- Deliver **uninterrupted local anesthetic**. Combination of saline lavage and consistent aspiration helps ensure a core with every cycle.
- **Fully closed system reduces contamination risk**. No programming required.
- **Tissue acquisition occurs every 4.5 seconds** with a single insertion and clearly visible aperture.¹⁵



ATEC® Sapphire Console

Pairs with the ATEC® Sapphire 200 system, which can be used in all three modalities – stereotactic, ultrasound and MRI breast biopsy – with specific handpieces for each.



ATEC® Needle



ATEC® Introducer

ATEC Handpieces for use with Ultrasound

Part Number	Description	Outer Cannula	Needle Length	Aperture Size	Compatible Introducer
ATEC 0909-12	Petite 9g (3.7 mm) x 9cm, 12 mm	9G	9 cm	12 mm	
ATEC 0909-20	9g (3.7 mm) x 9cm, 20 mm	9G	9 cm	20 mm	AI090920
ATEC 0912-12	Petite 9g (3.7 mm) x 12cm, 12 mm	9G	12 cm	12 mm	
ATEC 0912-20	9g (3.7 mm) x 12cm, 20 mm	9G	12 cm	20 mm	AI091220
ATEC 0914-20	9g (3.7 mm) x 11cm, 20 mm	9G	14 cm	20 mm	
ATEC 1209-20	12g (2.7 mm) x 9.5cm, 20 mm	12G	9 cm	20 mm	AI120920
ATEC 1212-20	12g (2.7 mm) x 12cm, 20 mm	12G	12 cm	20 mm	AI121220

SuperSonic® MACH® 30

The SuperSonic® MACH® 30 is an ultrasound system with excellent image quality and innovative imaging modes that will efficiently perform a variety of ultrasound-guided interventional procedures such as biopsies, marker placements and wire localizations.¹⁶

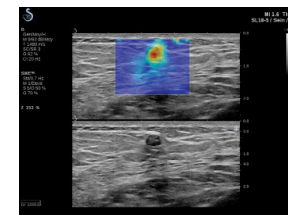
- **Exceptional Imaging.** SuperSonic® MACH® 30 ultrasound system leverages more than 10 years of clinical expertise. Deep inside is a powerful processor running on our exclusive UltraFast technology, the design for which was inspired by the video gaming industry. The intelligent signal processing with image capture capacity of up to 20,000 frames per second brings new possibilities into ultrasound imaging.¹⁷
- **Needle Trajectory Prediction.** Needle PLUS imaging was developed to provide enhanced needle visibility and introduce unique functionality – needle trajectory prediction. Optimizations for a large range of needles and automated enhancements may offer more control, and ultimately additional confidence when performing biopsies.
- **User Comfort.** Designed to help create a productive and pain-free environment with a large full HD screen, embedded SonicPad® touchpad, ergonomic and lightweight transducers, and a low noise level system.

Subtle Invasive Lesions Imaging

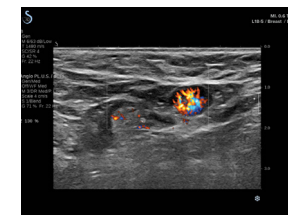
For biopsy under ultrasound guidance, ShearWave® elastography helps find or target lesions that are not confidently seen with B-mode imaging. A qualitative SWE color scale can be used to record the maximum elasticity in and around lesions.¹⁸



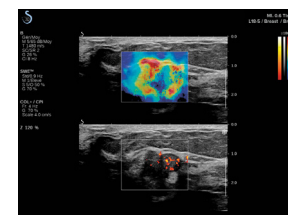
SuperSonic® MACH® Imaging Modes



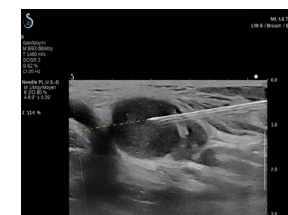
ShearWave® PLUS elastography is designed to dynamically evaluate changes in tissue stiffness and easily quantify them. This noninvasive approach is clinically proven to be reliable and highly reproducible.



Angio PLUS is a color mode providing the possibility to explore microvascular flow. Angio PLUS imaging can be the solution for an advanced exploration of the axillary region and the evaluation of lymph nodes.



TriVu Imaging is a real-time imaging mode that allows you to display morphology, stiffness, and microvasculature all in the same image, simultaneously.



Needle PLUS imaging provides enhanced visibility for needle placement during biopsy and introduces needle trajectory prediction.

Hologic Solution to MRI Biopsy

PATIENT FOCUSED, PHYSICIAN INSPIRED

ATEC® MRI Biopsy Device

MRI biopsy pioneer and market leader

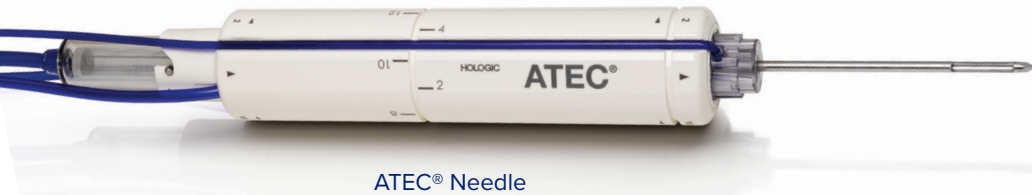
The original pioneer in breast MRI biopsy procedures and today's market leader, known for its **speed, accuracy, and simplicity.**

- The **fastest procedure time** in MRI by 10 minutes.¹⁹
- With ATEC MRI, physicians have reduced the typical procedure time to under 40 minutes, greatly improving patient comfort and optimising costly magnet time.²⁰
- Deliver **uninterrupted local anesthetic.** Combination of saline lavage and consistent aspiration helps ensure a core with every cycle.¹⁵
- Totally closed system reduces contamination risk. No programming required.

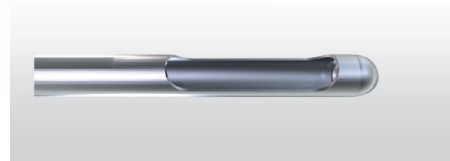


ATEC® Sapphire Console

Pairs with the ATEC® Sapphire 200 system, an all-in-one platform intended for use under ultrasound, MRI, stereotactic and 3D™-image guidance.



ATEC® Needle



ATEC® MRI Access Needle

ATEC® Introducer Localization System

- Exclusive to the ATEC® MRI Biopsy System
- Confirm your target prior to completing the biopsy.
- Each ATEC ILS is comprised of introducer stylet, introducer sheath, needle guide and localizing obturator



ILS Kit

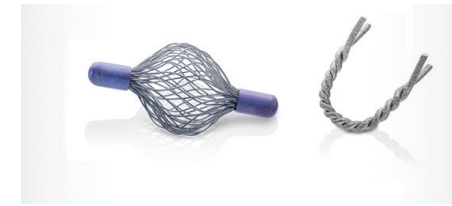
Marker Solutions

A SHAPE FOR ANY CASE

Biopsy Site Markers

MRI-compatible options

Hologic offers biopsy site marking options with distinct shapes for MRI use.



Tumark® Vision and Tumark Professional U Biopsy Site Markers



Trimark® Biopsy Site Markers

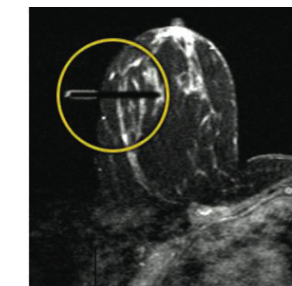


Trimark® features a rigid-end-deploy delivery device for an integrated MRI solution.

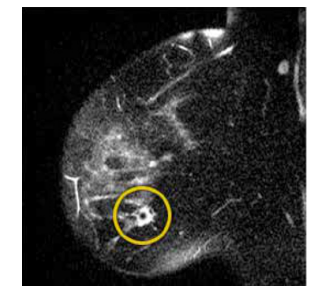
Part Number	Marker Description	Shape
TRIMARK-TD-13MR	TriMark biopsy site marker for MRI-guided breast biopsy. 130mm, 9G Cork shape	
TRIMARK-TD-2S-13-13MR	TriMark biopsy site marker for MRI-guided breast biopsy. 30mm, 9G Hourglass shape	
601570	Tumark MRI U shape 120mm, 18G	
601590	Tumark Vision MRI biopsy site marker 120mm, 18G	

ATEC® MRI Biopsy Needle Specification

	Standard ATEC MRI biopsy device	ATEC MRI access biopsy device
Gauge	9G	9G
Length	14cm	14cm
Aperture	20mm	12mm
Tubing	20ft	20ft



Axial image



Sagittal image

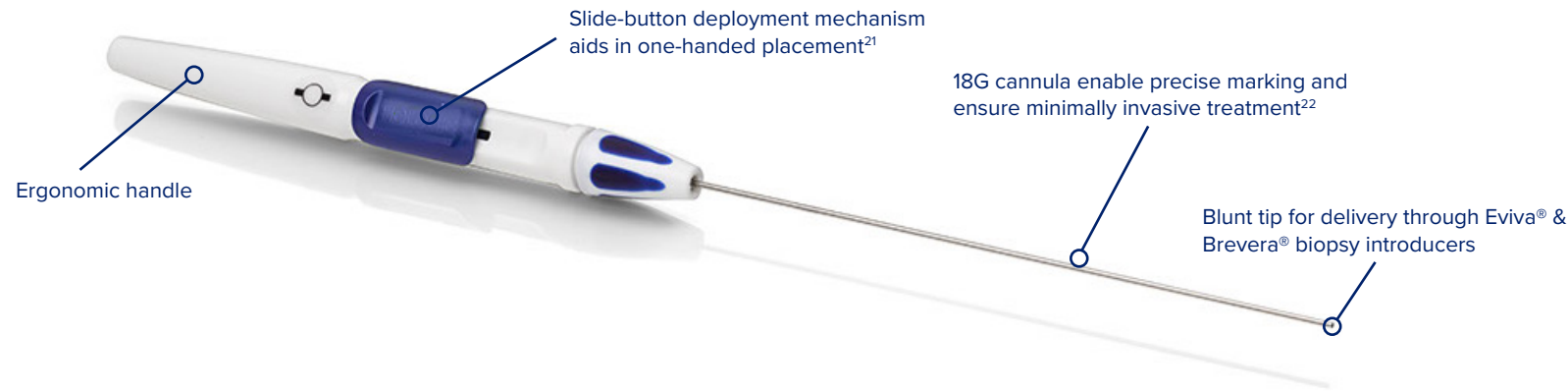
Hologic Site Biopsy Markers

EMPOWERING YOUR CHOICE

Tumark® Marker Solutions

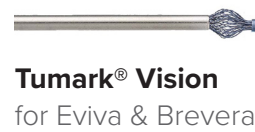
A SHAPE FOR ANY CASE

Stereotactic Biopsy Site Marking Collection

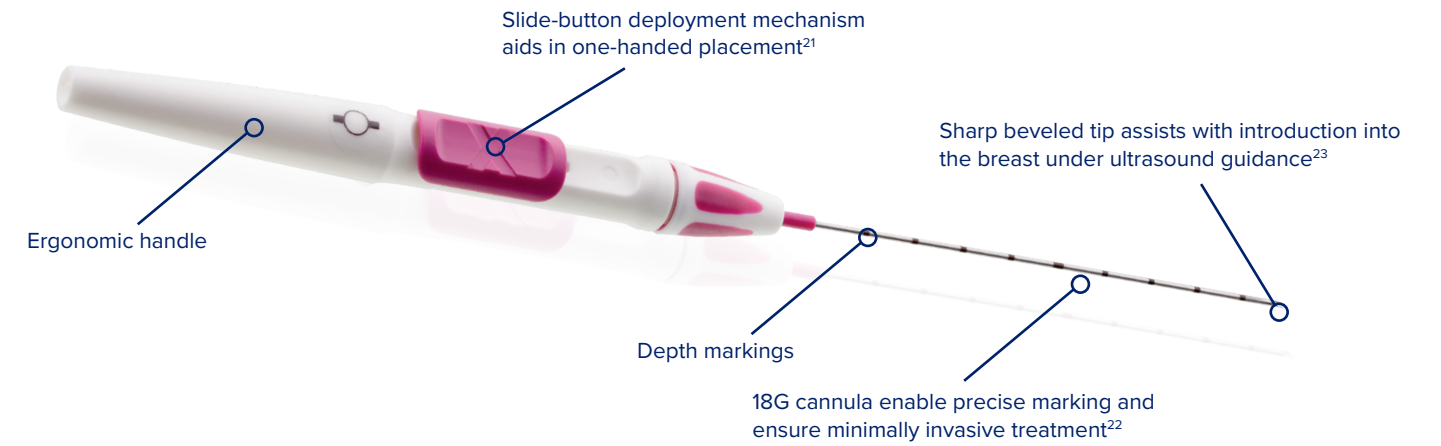


For use with Eviva® Breast Biopsy Device

Part Number	Marker Description	Shape	Length	Gauge	Eviva Biopsy Devices
TUMARK-E13-S-Q	Tumark Professional Q for Eviva® Standard		132 mm	18G	EVIVA_0913-20 EVIVA_1213-20
TUMARK-E13-P-Q	Tumark Professional Q for Eviva® Petite		135.5 mm	18G	EVIVA_0913-12 EVIVA_0913-12T
TUMARK-E13-S-X	Tumark Professional X for Eviva® Standard		129.5 mm	18G	EVIVA_0913-20 EVIVA_1213-20
TUMARK-E13-P-X	Tumark Professional X for Eviva® Petite		133 mm	18G	EVIVA_0913-12 EVIVA_0913-12T
TUMARK-E13-S-VISION	Tumark Vision for Eviva® Standard		129.5 mm	18G	EVIVA_0913-20 EVIVA_1213-20
TUMARK-E13-P-VISION	Tumark Vision for Eviva® Petite		133 mm	18G	EVIVA_0913-12 EVIVA_0913-12T



More from the Tumark Family of Markers for Percutaneous Application



Ultrasound-guided marking

Part Number	Marker Description	Shape	Length	Gauge
271510	Tumark Eye		129.5 mm	18G
271512	Tumark Eye		133 mm	18G
271559	Tumark Professional U shape		129.5 mm	18G
271560	Tumark Professional U shape		133 mm	18G
271589	Tumark Vision		132 mm	18G
271590	Tumark Vision		133.5 mm	18G



Tumark® Vision
Sharp beveled tip assists with introduction into the breast under ultrasound and MRI-guided use

For use with Brevera® Breast Biopsy Device

Product Code	Marker Description	Shape	Length	Gauge	Brevera Biopsy Needle
TUMARK-BREV-S-Q	Tumark Professional Q for Brevera® Standard		129.5 mm	18G	BREVDISP09
TUMARK-BREV-P-Q	Tumark Professional Q for Brevera® Petite		125.5 mm	18G	
TUMARK-BREV-S-X	Tumark Professional X for Brevera® Standard		127.5 mm	18G	
TUMARK-BREV-P-X	Tumark Professional X for Brevera® Petite		123.5 mm	18G	
TUMARK-BREV-S-VISION	Tumark Vision for Brevera® Standard		127.5 mm	18G	
TUMARK-BREV-P-VISION	Tumark Vision for Brevera® Petite		123.5 mm	18G	

MRI-guided marking

Product Code	Marker Description	Shape	Length	Gauge
601570	Tumark MRI U shape		120 mm	18G
601590	Tumark Vision MRI		120 mm	18G



Tumark® Handle for MRI

Tumark® Biopsy Site Markers

Intelligently designed to provide long-term ultrasound visibility, all Tumark Markers are non-bioabsorbable, biocompatible permanent markers offering excellent visibility under mammography at deployment and are designed to minimize movement²¹

Hologic Site Biopsy Markers

EMPOWERING YOUR CHOICE

TriMark Breast Biopsy Markers



TriMark® For Eviva with Introducer



Markers are made of biocompatible titanium in 2 distinct shapes - **cork** and **hourglass**.

For use with Eviva® Breast Biopsy Device

Part Number	Marker Description	Shape	Length	Gauge	Eviva Biopsy Devices
TRIMARK-EVIVA-13	TriMark for Eviva & Brevera, 13CM, Cork shape		130 mm	9G, 12G	EVIVA_0913-20 EVIVA_0913-12
TRIMARK-EVIVA-2S-13	TriMark for Eviva & Brevera, 13CM, Hourglass shape		130 mm	9G, 12G	EVIVA_0913-12T EVIVA_1213-20
TRIMARK-EVIVA-10	TriMark for Eviva, 10CM, Cork shape		100 mm	9G	EVIVA_0910-12T EVIVA_0910-20
TRIMARK-EVIVA-2S-10	TriMark for Eviva, 10CM, Hourglass shape		100 mm	9G	EVIVA_0910-12

For use with Brevera® Breast Biopsy Device

Part Number	Marker Description	Shape	Length	Gauge	Breveria Biopsy Devices
TRIMARK-EVIVA-13	TriMark for Eviva & Brevera, 13CM, Cork shape		130 mm	9G, 12G	BREVDISP09
TRIMARK-EVIVA-2S-13	TriMark for Eviva & Brevera, 13CM, Hourglass shape		130 mm	9G, 12G	

Compatible with ATEC® Breast Biopsy Device

Part Number	Marker Description	Shape	Length	Gauge	ATEC Biopsy Devices
TRIMARK-TD-3609	TriMark biopsy site marker for Stereotactic-guided breast biopsy. Cork shape		360 mm	9G	ATEC 0909-20 ATEC 0909-12
TRIMARK-TD-2S-36-09	TriMark biopsy site marker for Stereotactic-guided breast biopsy. Hourglass shape		360 mm	9G	ATEC 0912-20 ATEC 0912-12 ATEC 0914-20
TRIMARK-TD-3612	TriMark biopsy site marker for Stereotactic-guided breast biopsy. Cork shape		360 mm	12G	ATEC 1209-20 ATEC 1212-12
TRIMARK-TD-2S-36-12	TriMark biopsy site marker for Stereotactic-guided breast biopsy. Hourglass shape		360 mm	12G	

SecurMark® and TriMark® Marker Solutions

STEREOTACTIC X-RAY GUIDANCE

SecurMark Breast Biopsy Markers



Markers are made of biocompatible titanium in 2 distinct shapes - **mini cork** and **top hat**.

SecurMark for Eviva® and Brevera®

- Utilizes a rigid end-deploy delivery system that requires no pull-back for deployment.
- Part of the Eviva integrated stereotactic solution to ensure easy and accurate delivery.



Mini Cork shape Top Hat shape

For use with Eviva® Breast Biopsy Device

Part Number	Marker Description	Shape	Length	Gauge	Eviva Biopsy Devices
SMARK-EVIVA-13	SecurMark for Eviva & Brevera 13 cm, Mini Cork shape		130 mm	9G, 12G	EVIVA_0913-20 EVIVA_0913-12T
SMARK-EVIVA-2S-13	SecurMark for Eviva & Brevera 13 cm, Top Hat shape		130 mm	9G, 12G	EVIVA_1213-20
SMARK-EVIVA-10	SecurMark for Eviva 10 cm, Mini Cork shape		100 mm	9G, 12G	EVIVA_0910-12T EVIVA_0910-20
SMARK-EVIVA-2S-10	SecurMark for Eviva 10 cm, Top Hat shape		100 mm	9G, 12G	

For use with Brevera® Breast Biopsy Device

Part Number	Marker Description	Shape	Length	Gauge	Breveria Biopsy Devices
SMARK-EVIVA-13	SecurMark for Eviva & Brevera, 13CM, Cork shape		130 mm	9G, 12G	BREVDISP09
SMARK-EVIVA-2S-13	SecurMark for Eviva & Brevera, 13CM, Hourglass shape		130 mm	9G, 12G	

Compatible with ATEC® Breast Biopsy Device

Part Number	Marker Description	Shape	Length	Gauge	ATEC Biopsy Devices
SMARK-ATEC-2S-36-09	SecurMark for ATEC biopsy site marker for Stereotactic-guided breast biopsy. Top Hat shape		360 mm	9G	ATEC 0909-20 ATEC 0909-12
SMARK-ATEC-36-09	SecurMark for ATEC biopsy site marker for Stereotactic-guided breast biopsy. Mini Cork shape		360 mm	9G	ATEC 0912-20 ATEC 0912-12 ATEC 0914-20
SMARK-ATEC-36-12	SecurMark for ATEC biopsy site marker for Stereotactic-guided breast biopsy. Mini Cork shape		360 mm	12G	ATEC 1209-20 ATEC 1212-20

Hologic Site Biopsy Markers

EMPOWERING YOUR CHOICE

SecurMark® and TriMark® Marker Solutions

FOR ULTRASOUND & MRI PROCEDURES

TriMark Breast Biopsy Markers



**TriMark Titanium
Cork shape**

**TriMark Titanium
Hourglass shape**

TriMark Biopsy Site Markers

- All TriMark biopsy site markers include:
- Deployment device
 - Biopsy site marker

For Ultrasound use with ATEC® Breast Biopsy Device

Part Number	Marker Description	Shape	Length	Gauge	ATEC Biopsy Devices
TRIMARK-TD-1309	TriMark biopsy site marker for Ultrasound-guided breast biopsy. Cork shape		130 mm	9G	ATEC 0909-20 ATEC 0912-20
TRIMARK-TD-2S-13-09	TriMark biopsy site marker for Ultrasound-guided breast biopsy. Hourglass shape		130 mm	9G	
TRIMARK-TD-1312	TriMark biopsy site marker for Ultrasound-guided breast biopsy. Cork shape		130 mm	12G	ATEC 1209-20 ATEC 1212-20
TRIMARK-TD-2S-13-12	TriMark biopsy site marker for Ultrasound-guided breast biopsy. Hourglass shape		130 mm	12G	

For MRI use with ATEC® Breast Biopsy Device

Part Number	Marker Description	Shape	Length	Gauge	ATEC Biopsy Devices
TRIMARK-TD-13MR	TriMark biopsy site marker for MRI-guided breast biopsy. Cork shape		130 mm	9G	ATEC 0914-20MR ATEC 0914-12MR Petite
TRIMARK-TD-2S-13-13MR	TriMark biopsy site marker for MRI-guided breast biopsy. Hourglass shape		130 mm	9G	

TriMark® Biopsy Site Markers

Reliable and simple bio-compatible Titanium metal markers, optimal for thin-breasted patients and superficial lesions.

SecurMark Breast Biopsy Markers



Bio-absorbable suturelike netting

**SecurMark Titanium
Mini Cork shape**

**SecurMark Titanium
Top Hat shape**

For Ultrasound use with ATEC® Breast Biopsy Device

Part Number	Marker Description	Shape	Length	Gauge	ATEC Biopsy Devices
SMARK-ATEC-13-09	SecurMark for ATEC 13 cm, Mini Cork shape		130 mm	9G	ATEC 0909-20 ATEC 0912-20
SMARK-ATEC-2S-13-09	SecurMark for ATEC 13 cm, Top Hat shape		130 mm	9G	
SMARK-ATEC-13-12	SecurMark for ATEC 13 cm, Mini Cork shape		130 mm	12G	ATEC 1209-20 ATEC 1212-20
SMARK-ATEC-2S-13-12	SecurMark for ATEC 13 cm, Top Hat shape		130 mm	12G	

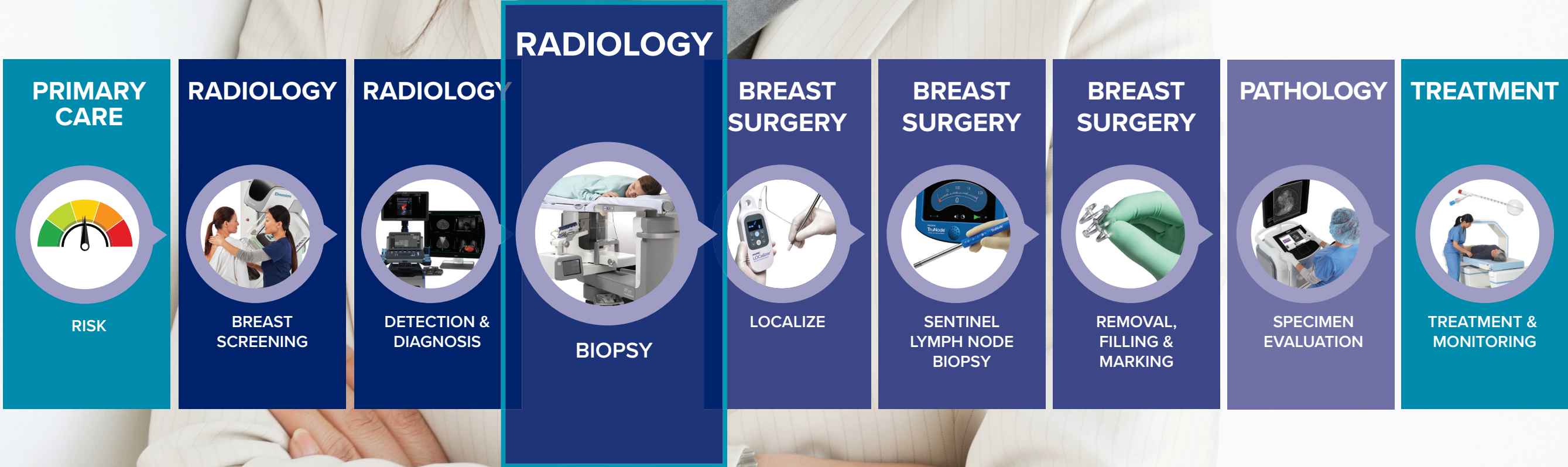
SecurMark® Biopsy Site Markers

A bioabsorbable suture-like net carrying a biocompatible permanent marker, designed to minimize migration within the biopsy cavity and enhance ultrasound visualization for three to four weeks post-biopsy.²⁴

A Complete Continuum of Care

Best in class, reliable, efficient solutions across the breast health continuum

Hologic's breast health innovations are focused on technologies designed to integrate multiple steps in the patient pathway into a single visit, while also offering speed, comfort and accuracy in outcomes, to ultimately deliver the best possible patient experience. Partner with Hologic to gain access to industry-leading, clinically proven tools to treat your patients at every step along the breast health pathway, while simultaneously reducing costs and creating efficiencies.



At Hologic, our breast health solutions deliver trailblazing technologies to keep you on the forefront of breast care. Our passion drives us in the relentless pursuit of innovative tools that set new paradigms for the early detection, accurate diagnosis, intervention and treatment of breast cancer — technologies to help you protect and preserve the lives of your patients. **With you, we are on a mission to help women live longer, healthier lives.**

For more information on the Hologic family of breast health solutions, please visit hologic.com.



EC REP Hologic BV, Da Vincilaan 5, 1930 Zaventem, Belgium

Notified Body number whenever applicable
EC Representative information wherever applicable

Product

Brevera® Breast Biopsy System Atec® Breast Biopsy System
 Eviva® Breast Biopsy System SecurMark® Biopsy Site Markers
 Affirm® Prone Biopsy System TriMark® Biopsy Site Markers
 Affirm® Upright Breast Biopsy System

Product

Faxitron Core Specimen Radiography System
 SuperSonic® MACH® 30 (NB 0459)

References

1. Hologic data on file, MISC-06068, Results from Eviva Audit, Kadence International, July 2015. **2.** Hologic data on file, VAR-05326 **3.** Hologic data on file MISC-07662, results from Kadence International study 2015. **4.** Hologic data on file, DHM-06042, Compared to Eviva device. **5.** Hologic data on file, VAR-06113 **6.** Hologic data on file, CSR-00127, Results from, "A Prospective, Block Stratified Clinical Trial to Evaluate the Performance and Operation of the Brevera® Breast Biopsy System" (NCT03300206) (US). **7.** Hologic data on file, MISC-07678, MISC-07662, Brevera Pulse Survey, Quantitative report. Inspired Insights. April 2019. **8.** Schrading S, Martine D, Dirrichs T, et al. "Digital Breast Tomosynthesis-guided Vacuum-assisted Breast Biopsy: Initial Experiences and Comparison with Prone Stereotactic Vacuum-assisted Biopsy." Radiology. 2015 274:3, 654-662 E-pub 2014 Nov 12. **9.** Smith A, Sumpkin J, Zuley M, et al. "Comparison of Prone Stereotactic vs. Upright Tomosynthesis Guided Vacuum Assisted Core Breast Biopsies." (paper presented at the annual meeting for the Radiological Society of North America. Chicago, IL, November 2014). **10.** Hologic data on file, WP-000269 Patel. Samir B, "An evaluation of the Eviva biopsy device on the speed and efficiency of stereotactic breast biopsy procedures" Based on 50 consecutive biopsy procedures. **11.** Hologic data on file, AW-02708 - Instructions for use - Eviva - Stereotactic guided breast biopsy system. **12.** Hologic data on file, MISC-06068, Attachment 1 Kadence study, "Eviva Audit – Identifying optimal claims for the Eviva Breast Biopsy device", July 2015. **13.** Hologic data on file, VER-05759, VER-04202, VER-04111, VER-03205, VER-03792, DHM-02115, DHM-02203. **14.** Hologic data on file MISC-07662, Compared to Specimen imaging on mammography unit outside of the biopsy suite, 2015 Kadence International survey of 200 healthcare professionals. **15.** Hologic data on file, VER-08019, attachment 07. **16.** MACH 30 V1 Evaluation Report Hôpital privé Jean Mermoz July, 5th & 6th 2018. PM.TP/TR.092. MACH 30 V1 Evaluation Report CHRU Jean Minjoz - Besançon – France. PM.TP/TR.093. MACH 30 V1 SSI in-house. PM.TP/TR.094. **17.** Bercoff J, Ultrafast Ultrasound Imaging. Ultrasound Imaging - Medical Applications. 2011 Aug; DOI: 10.5772/19729 **18.** SWE during 2nd look US helps target subtle invasive lesions for biopsy under ultrasound guidance. Addition of shear wave elastography during second look MR imaging directed breast US: effect on lesion detection and biopsy targeting. Plecha DM, Pham RM, Klein N, Coffey A, Sattar A, Marshall H. Radiology. 2014 Sep;272(3):657-64. **19.** Compared to Mammotome and Vacor. M. Scarth, W. Teh; Harrow/UK. MR-guided vacuum-assisted core-needle breast biopsy: Comparison of three vacuum-assisted biopsy devices. ECR Congress 2009. Scientific Paper, e-Poster: B-295. **20.** Tumark® Marker Data Collection Study, 2017, DHM-06169, 3 clinicians at 3 hospitals for 90 marker placements, 2017. **21.** Schrading S, Simon B, Braun M, Wardelmann E, Schild H, Kuhl C. MRI-Guided Breast Biopsy: Influence of Choice of Vacuum Biopsy System on the Mode of Biopsy of MRI Only Suspicious Breast Lesions. AJR 2010; 194: 1650-1657. **22.** Tumark® Marker Data Collection Study, 2017, DHM-06169, 3 clinicians at 3 hospitals for 90 marker placements, 2017. **23.** Hologic Data on File: MISC-07876, Attachment 2 **24.** Data on File with Hologic: VER-07555 **25.** Pickney and Shah, 2013, Prospective comparative study to evaluate the sonographic visibility of five commercially available breast biopsy markers. (GelMark, HydroMARK, SecurMark, SENOMARK, and UltraClip by Bard (BioDur® 108 core)). Yen et al. verified that SecurMark and SENOMARK devices show reduced displacement when compared to traditional metal surgical clips (28% and 27% vs 38% displacement, p = 0.001 and p = 0.0001). Visibility is dependent on surrounding tissue, experience may vary.

Breast & Skeletal Solutions | www.hologic.com | euinfo@hologic.com | +32.2.711.4680