



# World class digital physiotherapy, anytime, anywhere



## Musculoskeletal (MSK) conditions affect nearly one-third of the UK population<sup>1</sup>

**3 in 5** people over the age of 65 are affected by an MSK condition<sup>2</sup>.

**30 million** working days are lost due to MSK disorders every year<sup>1</sup>.

**1.3 million** people are on a waiting list for MSK care<sup>3</sup>.

**£5 billion** is the NHS' annual expenditure with MSK<sup>4</sup>.

## The only solution proven to outperform in-person care<sup>5</sup>

Sword Health is committed to providing the most clinically validated solution to free people from pain, **with 29 scientific peer-reviewed papers and 37 submitted patents**. Powered by Sword's AI motion tracking technology, clinicians can precisely analyse members' progression and make data-driven clinical decisions.



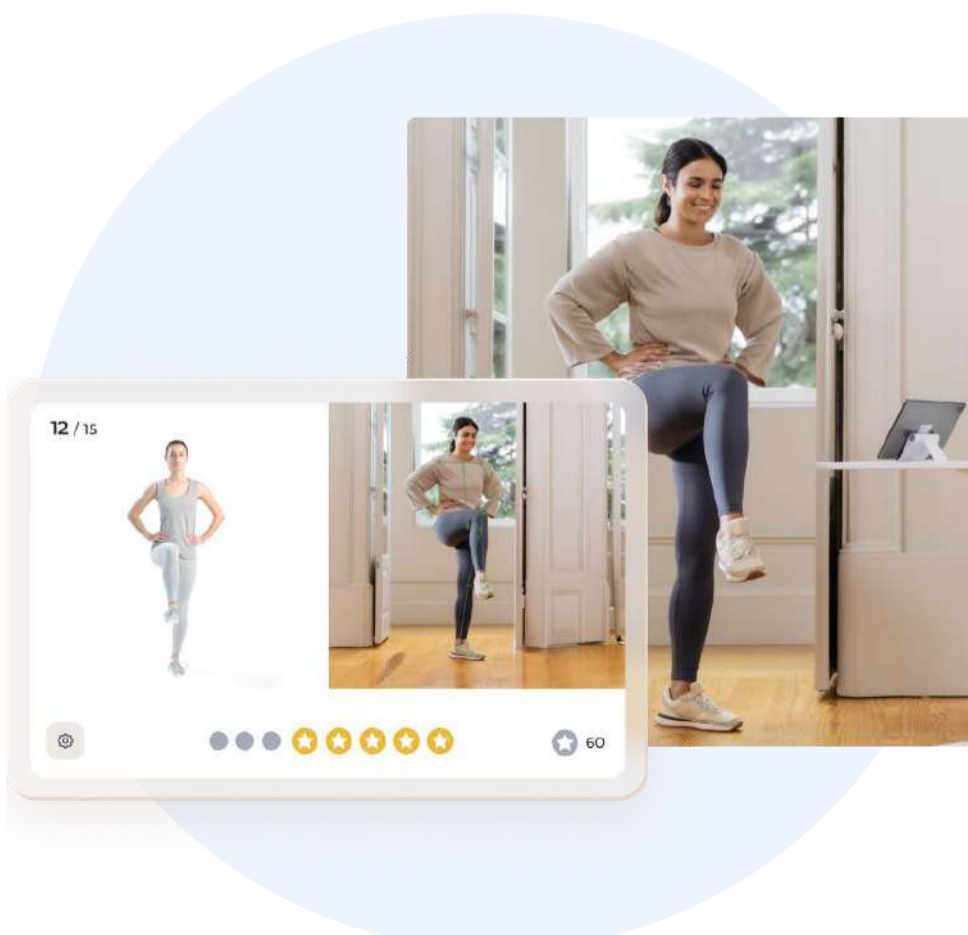
### HCPC registered physiotherapists

Every member is matched with a physio, available 24/7, who will create and customise a physiotherapy plan. On average, our physios adjust a member's plan 2-3 times per week, continually tailoring it to maximise progress for each individual.



### Convenient access to effective care

Our anytime, anywhere digital solution is not only more convenient for members, it's more effective. In fact, Sword's approach with physios and AI motion tracking medical device outperforms traditional, in-clinic physiotherapy by 30%<sup>6</sup>, with members performing 2.7 times more physiotherapy sessions<sup>7</sup>.



## Industry-leading outcomes

↑ **67 %**  
of members are pain-free\*<sup>8</sup>

↓ **70 %**  
decrease in surgery intent<sup>9</sup>

↓ **47 %**  
drop in medication consumption<sup>8</sup>

↑ **81 %**  
completion rate

↑ **68 %**  
increase in productivity<sup>10</sup>

**9.7/10**  
member satisfaction score

<sup>1</sup> <https://www.england.nhs.uk/elective-care-transformation/best-practice-solutions/musculoskeletal/>

<sup>2</sup> <https://www.versusarthritis.org/media/24653/state-of-msk-health-2021.pdf>

<sup>3</sup> <https://www.england.nhs.uk/statistics/wp-content/uploads/sites/2/2023/06/Incomplete-Commissioner-Apr23-XLS-7462K-36960.xls>

<sup>4</sup> <https://www.england.nhs.uk/statistics/wp-content/uploads/sites/2/2023/06/Community-health-services-waiting-lists-2023-24-April-2.xlsx>

<sup>5</sup> <https://www.gov.uk/government/publications/musculoskeletal-health-applying-all-our-health/musculoskeletal-health-applying-all-our-health#fn1>

<sup>6</sup> <https://www.nature.com/articles/s41598-018-29668-0>

<sup>7</sup> [https://www.nature.com/articles/s41598-018-29668-0?mkt\\_tok=NjclLudKUC0wMTEAAAGTpywzQvUieLWmm2K0zrEIfvF7WocNS3W6R69cNZDlwMZmnN-ugtyUCz](https://www.nature.com/articles/s41598-018-29668-0?mkt_tok=NjclLudKUC0wMTEAAAGTpywzQvUieLWmm2K0zrEIfvF7WocNS3W6R69cNZDlwMZmnN-ugtyUCz)

<sup>8</sup> [https://journals.lww.com/ajpmr/Fulltext/2022/03000/Digitally\\_Assisted\\_Versus\\_Conventional\\_Home\\_Based.aspx](https://journals.lww.com/ajpmr/Fulltext/2022/03000/Digitally_Assisted_Versus_Conventional_Home_Based.aspx)

<sup>9</sup> [https://www.nature.com/articles/s41598-018-29668-0?mkt\\_tok=NjclLudKUC0wMTEAAAGTpywzQvUieLWmm2K0zrEIfvF7WocNS3W6R69cNZDlwMZmnN-ugtyUCz](https://www.nature.com/articles/s41598-018-29668-0?mkt_tok=NjclLudKUC0wMTEAAAGTpywzQvUieLWmm2K0zrEIfvF7WocNS3W6R69cNZDlwMZmnN-ugtyUCz)

<sup>10</sup> [https://www.nature.com/articles/s41598-018-29668-0?mkt\\_tok=NjclLudKUC0wMTEAAAGTpywzQvUieLWmm2K0zrEIfvF7WocNS3W6R69cNZDlwMZmnN-ugtyUCz](https://www.nature.com/articles/s41598-018-29668-0?mkt_tok=NjclLudKUC0wMTEAAAGTpywzQvUieLWmm2K0zrEIfvF7WocNS3W6R69cNZDlwMZmnN-ugtyUCz)